

ASER 2022 ANNUAL SCIENTIFIC MEETING

Hilton, Austin | Austin, Texas | October 19-22, 2022

ASER AWARDS CEREMONY

JAMLIK-OMARI JOHNSON, MD, FASER



ASER 2022 ANNUAL SCIENTIFIC MEETING

Hilton, Austin | Austin, Texas | October 19-22, 2022



SCIENTIFIC AND EDUCATION AWARDS

TAREK HANNA and JIMMY LEE
Scientific Program Subcommittee



ASER 2022 ANNUAL SCIENTIFIC MEETING

Hilton, Austin | Austin, Texas | October 19-22, 2022

Scientific Program Subcommittee

- Anjali Agrawal
- Ludo Beenen
- Naga Ramesh Chinapuvvula
- Jessica Rotman
- Zachary DelProposto
- Noah Ditkofsky
- Carl Flink
- Urvi Fulwadhva
- Joseph Graves
- Keith Herr
- Carrie Hoff
- Anand Prabhakar
- Sean Johnston
- Meir Scheinfeld
- Bharti Khurana
- Christina LeBedis
- James Lee
- Robin Levenson
- Ken Linnau
- Ruth Magera
- Chris McAdams
- Johnathan Mezrich

Independent double review for all submitted written abstracts; double review for all educational exhibits; triple review/scoring for all oral science presentations



aser.org



ERadSociety



6
AWARDS

SCIENTIFIC PRESENTATIONS



Summa Cum Laude

\$200

Magna Cum Laude

\$100

Cum Laude

\$50

John H. Harris, Jr., MD
Award (*Carved Plaque*)

\$500

Certificate of Merit (2)



EDUCATIONAL EXHIBITS

6
AWARDS

Summa Cum Laude

Magna Cum Laude

Cum Laude

Robert A. Novelline, MD
Award (*Carved Plaque*)

Certificate of Merit (2)

2022 Meeting Awards

ASER 2022 ANNUAL SCIENTIFIC MEETING

Hilton, Austin | Austin, Texas | October 19-22, 2022

EDUCATIONAL AWARDS





Certificate of Merit (2)

Dana Galvan (University of New Mexico) & Adrian Xu (University of Utah)

Early discitis-osteomyelitis in acute care imaging

Adrian Xu, Dell Dunn, Patrick Kobes, and Brad Wright
Department of Radiology and Imaging Sciences,
University of Utah, Salt Lake City, UT
The authors have no financial relationships to disclose

LEARNING OBJECTIVES

Review imaging signs of early discitis-osteomyelitis in the acute care setting, with an emphasis on CT.

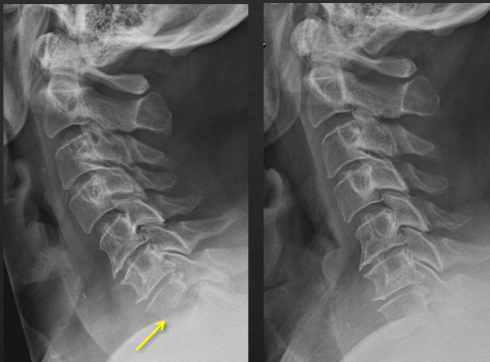
BACKGROUND

In its early stages, pyogenic discitis-osteomyelitis (aka vertebral osteomyelitis or spondylodiscitis) can be challenging for the clinician to diagnose due to nonspecific signs and symptoms. Imaging findings can also be challenging on initial studies, which may show subtle prevertebral inflammation, erosions of only one endplate, and preserved vacuum disc phenomenon. These findings are illustrated by the following cases, which also show that careful comparison to prior exams can improve sensitivity. Recognizing the early changes of discitis-osteomyelitis can play a critical role in timely diagnosis.



CASE #1

64 yo male with worsening neck pain



The XR demonstrates mild lower cervical prevertebral soft tissue swelling. Close inspection of vertebrae at this level reveals erosions of the inferior endplate of C7 (→) that are new since prior exam.

Early discitis-osteomyelitis in acute care imaging
Adrian Xu, Dell Dunn, Patrick Kobes, and Brad Wright

Non-Gonadal Doppler Ultrasound On-Call: Keeping Calm and Going with the Flow

Dana Galvan, University of New Mexico – No disclosures
- Corresponding author, dgalvan@salud.unm.edu
Shamus K. Moran, University of Washington – No disclosures
Sherry S. Wang, MBBS, University of Utah – No disclosures
Ayesha Nasrullah, MD, University of Missouri – No disclosures

Shaimaa Fadl, MD, Virginia Commonwealth University – No disclosures
Jennifer Weaver, MD, Vanderbilt University – No disclosures
Dustin Lima, DO, University of New Mexico – No disclosures
Jonathan W. Revels, DO, University of New Mexico – No disclosures

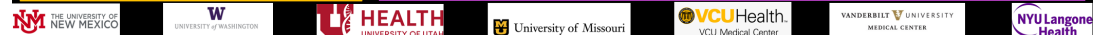
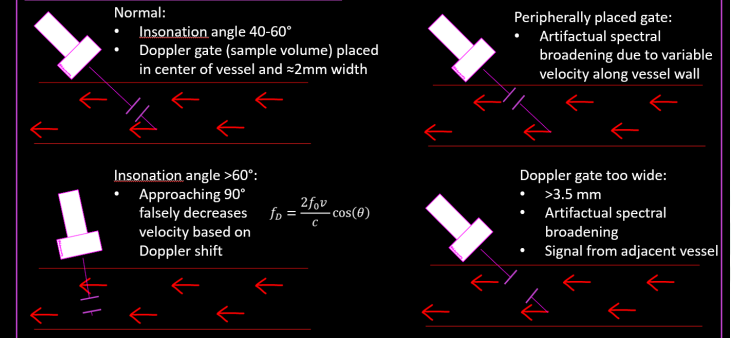
Learning Objectives

- After completing this educational exhibit, the learner will have an improved understanding of vascular Doppler acquisition, and abnormal Doppler findings related to arterial stenosis and deep vein thrombosis, procedural complications, and transplant complications that may be encountered in the emergency radiology and on-call setting.

Target Audience

- Practicing and in-training radiologists.

Proper technique and pitfalls



Non-Gonadal Doppler Ultrasound On-Call:
Keeping Calm and Going with the Flow

Dana Galvan, Shamus Moran, Sherry Wang, Ayesha Nasrullah,
Shaimaa Fadi, Jennifer Weaver, Dustin Lima, Jonathan Revels

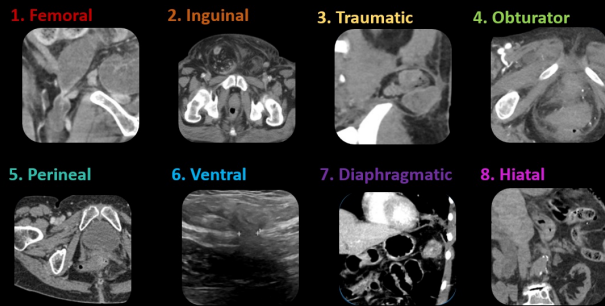


Cum Laude

Preya Shah, Stanford University

Top 8 acute abdominal hernias: the only guide you'll ever need!

Authors: Preya Shah¹, MD-PhD; Andrew Nguyen², DO; Luyao Shen¹, MD, Lindsey Marie Negrete¹, MD.
1. Stanford University, Stanford, California. 2. University of Arizona, Tucson, AZ.



OBJECTIVES:

1. Provide a simple framework for classification and characterization of abdominal hernias, particularly those presenting acutely for urgent evaluation
2. Present illustrative cases of abdominal hernias.
3. Discuss potential complications of abdominal hernias.

Financial disclosure: I do not have any relationships to report with ACCME defined ineligible companies. I will not be discussing unlabeled/investigational uses of medical devices or pharmaceuticals during this presentation.

Top 8 acute abdominal hernias: the only guide you'll ever need!

Preya Shah, MD-PhD; Andrew Nguyen, DO;
Luyao Shen, MD; Lindsey Marie Negrete, MD





Magna Cum Laude

Mark Bittman, Weill Cornell Medicine, Dept of Radiology

The Pediatric Hip: Epiphyses and Apophyses

Mark Bittman, MD & Ashwin Asrani, MD

Learning Objectives:

1. Know the common acute pediatric hip pathologies with an emphasis on epiphyses and apophyses
2. Understand key imaging features and relevant clinical characteristics
3. Improve awareness of pitfalls, mimics and developmental variants



Disclosures: I do not have any relationships to report with ACCME defined ineligible companies; I will be/will not be discussing unlabeled/investigational uses of medical devices or pharmaceuticals during this presentation. (If you will be, please provide information on the nature of what you will be discussing.)

Select References:

Gill KG. Pediatric hip: pearls and pitfalls. *Semin Musculoskelet Radiol*. 2013 Jul;17(3):328-38. doi: 10.1055/s-0033-1348099. Epub 2013 Jun 20. PMID: 23787987.

Kocher MS, Zurakowski D, Kasser JR. Differentiating between septic arthritis and transient synovitis of the hip in children: an evidence-based clinical prediction algorithm. *J Bone Joint Surg Am*. 1999;81(12):1662.

Jarrett DV, Mathewey T, Kleinman PK. Imaging SCFE: diagnosis, treatment and complications. *Pediatr Radiol*. 2013 Mar;43 Suppl 1:571-82. doi: 10.1007/s00247-012-2577-x. Epub 2013 Mar 12. PMID: 23478922.

Dillman JR, Hernandez RL. MRI of Legg-Calve-Perthes disease. *AJR Am J Roentgenol*. 2009 Nov;193(5):1394-407. doi: 10.2214/AJR.09.2444. PMID: 19843759.

Jaramillo D, Dormans JP, Delgado J, Laor T, St Geme JW 3rd. Hematogenous Osteomyelitis in Infants and Children: Imaging of a Changing Disease. *Radiology*. 2017 Jun;283(3):629-643. doi: 10.1148/radiol.2017151029. PMID: 28514223.

The Pediatric Hip: Epiphyses and Apophyses

Mark Bittman, MD and Ashwin Asrani, MD



Weill Cornell Medicine

Weill Cornell Imaging

New York-Presbyterian Weill Cornell Medicine



aser.org



ERadSociety

1988



Summa Cum Laude

Se-Young Yoon, Beth Israel Deaconess Medical Center

Approaching Common Biases in Emergency Radiology

Se-Young Yoon MD, Abraham Fourie Bezuidenhout MD, Jonathan Kruskal MD, Karen Lee MD

- With the transition to peer learning review of cases, many diagnostic errors in radiology are found to be attributable to cognitive biases.
- Particularly in the emergency radiology setting, high volume and rapid pace can result in heavy reliance on biases and heuristics.
- A more focused investigation of these biases is thus warranted.

GOALS & OBJECTIVES

- Review common biases with a focus on those more prevalent in emergency radiology. Several **case examples** are provided.
- Biases will be organized by the five approximate and expected phases of occurrence during reading a study.
- **Introduce biases that have not yet been defined in radiological publications** to the best of our knowledge. These include *triage cueing*, *contrast effect*, and *need for closure*.
- Explore strategies for overcoming cognitive biases in clinical practice.

Beth Israel Lahey Health
Beth Israel Deaconess Medical Center

 HARVARD MEDICAL SCHOOL
TEACHING HOSPITAL

Approaching Common Biases in Emergency Radiology

Se-Young Yoon MD, Abraham Fourie Bezuidenhout MD, Jonathan Kruskal MD, Karen Lee MD.



Beth Israel Deaconess
Medical Center
A teaching hospital of
Harvard Medical School



Robert A. Novelline, MD Award



Best educational submission by a trainee

Framing bias: phenomenon where different diagnostic conclusions are derived from the same information based on its presentation (i.e. how it is "framed").

Context bias: diagnostic conclusions are influenced by the radiologist's own recent experiences and perceived disease prevalence ("context") rather than true prevalence. REFERENCE: Egglin and Feinstein's PE study in 1996

Confirmation bias: tendency to seek and interpret information to confirm existing theories.

On a similar note, **Anchoring bias** refers to heavy reliance on the initial impression despite additional, possibly contradictory, evidence.

Approaching Common Biases in Emergency Radiology

Se-Young Yoon MD, Abraham Fourie Bezuidenhout MD, Jonathan Kruskal MD, Karen Lee MD.



Beth Israel Deaconess Medical Center

A teaching hospital of Harvard Medical School

ASER 2022 ANNUAL SCIENTIFIC MEETING

Hilton, Austin | Austin, Texas | October 19-22, 2022

SCIENTIFIC AWARDS





Certificate of Merit

#X

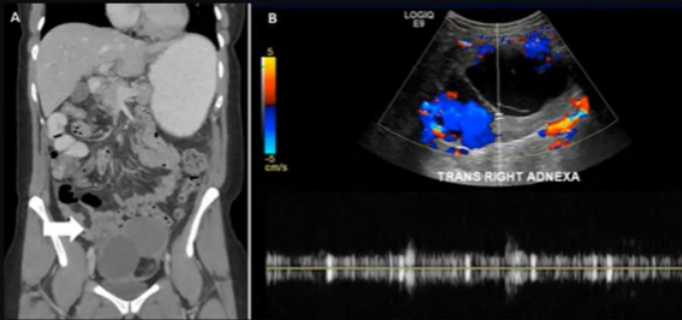
Podium

Name, University

Transvaginal US vs. CT in Non-pregnant Premenopausal Women presenting to the ER
Clinical Impact of the 2nd Examination when Both are Performed



Transvaginal US....



Authors: Charles D.



CD Viers, MG Lubner, & PJ Pickhardt
University of Wisconsin School of Medicine & Public Health





Certificate of Merit

#X

Podium

Name, University

What is peer learning?

An alternative to peer review inspired by non-punitive error reporting and the just culture patient safety model



Title of the project

Features of Peer Learning

Result in

Positive effects of

Separates learning and QI from performance evaluation



Removes fear and defensiveness to learning

Centered around learning conferences as improvement tool. Teaching points are presented regularly to department or division



Allows for learning and improvement of the whole practice instead of just the individual

Recurrent, important, or repeatable errors and other relevant teaching points are selected



Some lessons will be amenable to process and quality improvement projects

Cases submitted from prior comparison studies instead of random sampling



Identifies more learning opportunities with less workflow interruption

Authors: Eric





Cum Laude

#X

Podium

Insert name here

Use of Dual-Energy CT to differentiate benign adrenal adenomas from other adrenal masses

Anne-Sophie Loonis MD MSc, HeiShun Yu MD, Daniel Glazer MD, Camden Bay PhD, Aaron Sodickson, MD PhD

Brigham & Women's Hospital, Department of Radiology

THE AMERICAN SOCIETY OF
EMERGENCY RADIOLOGY



Use of Dual-Energy CT to differentiate benign adrenal adenomas from other adrenal masses

Authors: Anne Sophie Loonis, Heishun Yu, Daniel Glazer, Camden Bay, Aaron Sodickson





Magna Cum Laude

#X

Podium

Insert name here, institution

MESH
IN-HOUSE CREATION INCUBATOR

**Next-level Imaging Triage: Predicting Imaging Utilization from
Emergency Department Initial Triage Notes using machine
Learning and Natural Language Processing**
(Abstract CID:3598332)

Zheng, Youyun; Ge, Will; Whitehead, David; White, Ben; Alkasab, Tarik; Saini, Sanjay; Lev, Michael H; Li, Matthew D; Succi, Marc D.

Department of Radiology
Massachusetts General Hospital
Boston, MA
youyunzheng@hms.harvard.edu
@zheng_youyun

Next-level Imaging

Authors: Zheng, .



MASSACHUSETTS
GENERAL HOSPITAL





Summa Cum Laude

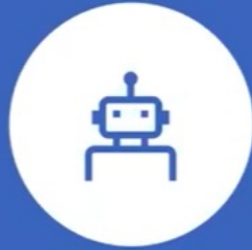
#X

Podium

Sarah



Machine Learning Mod



Machine Learning Model for Chest Radiographs in Emergency Radiology: Using local data to enhance performance

Sarah Mohn BAsC, Maria Koleva MD, Marco Law MSc, Nicolas Murray MD, FRCPC; William Parker MD, Savvas Nicolaou MD, FRCPC

Authors: Sarah





John H. Harris Jr., MD Award



Best scientific oral presentation by a trainee – Podium 7



Machine Learning Model for Chest Radiographs in Emergency Radiology: Using local data to enhance performance

Sarah Mohn BAsC, Maria Koleva MD, Marco Law MSc, Nicolas Murray MD, FRCPC; William Parker MD, Savvas Nicolaou MD, FRCPC



Machine Learning Model for Chest X-rays in Emergency Radiology: Using local data to enhance performance

Authors: Sarah Mohn, Maria Koleva, Marco Law, Nicholas Murray, William Parker, Savvas Nicolaou



ASER 2022 ANNUAL SCIENTIFIC MEETING

Hilton, Austin | Austin, Texas | October 19-22, 2022

FASER

CLASS OF 2021 FELLOWS



ASER 2022 ANNUAL SCIENTIFIC MEETING

Hilton, Austin | Austin, Texas | October 19-22, 2022

Nicolas Beckmann MD, FASER

Medical Director

Department of Radiology
Memorial Hermann Orthopedic & Spine
Hospital

Fellowship Director and Associate Professor

Sports, Orthopedic and Emergency Imaging
UTHealth- McGovern School of Medicine

Houston, Texas



aser.org



ERadSociety

ASER 2022 ANNUAL SCIENTIFIC MEETING

Hilton, Austin | Austin, Texas | October 19-22, 2022

Bharti Khurana MD, FASER

Founder and Director

Trauma Imaging Research and Innovation Center
Brigham and Women's Hospital

Assistant Professor

Harvard Medical School

Boston, Massachusetts



ASER 2022 ANNUAL SCIENTIFIC MEETING

Hilton, Austin | Austin, Texas | October 19-22, 2022

Koenraad Hans Nieboer MD, FASER

Senior Staff Member and Professor
Department of Radiology and Medical Imaging (CRAD)
Universitair Ziekenhuis Brussel

Brussels, Belgium



aser.org



ERadSociety

ASER 2022 ANNUAL SCIENTIFIC MEETING

Hilton, Austin | Austin, Texas | October 19-22, 2022

25-YEAR MEMBERS

SUSAN JOHN, MD, FASER



ASER 2022 ANNUAL SCIENTIFIC MEETING

Hilton, Austin | Austin, Texas | October 19-22, 2022

25 Year Members

Congratulations to our 25-year ASER
Members

C. Craig Blackmore

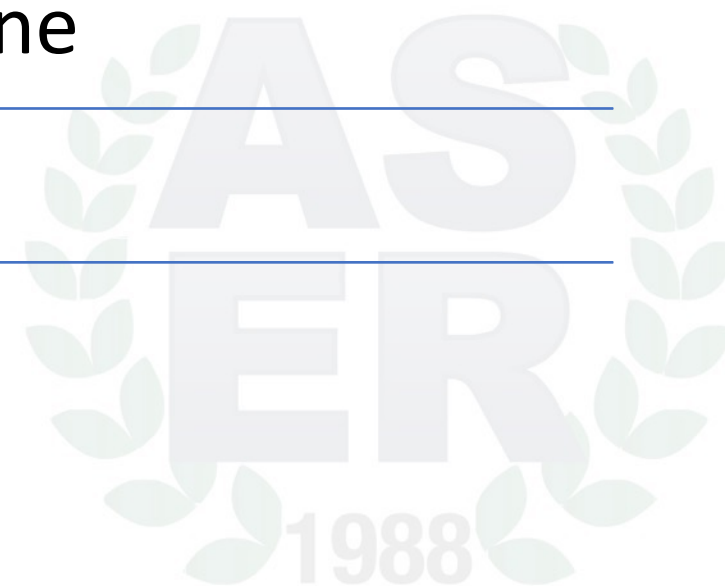
Shigeru Ehara

Dan Fertel

Caroline Sherbourne

Charles Luttenton

Joseph Yu



ASER 2022 ANNUAL SCIENTIFIC MEETING

Hilton, Austin | Austin, Texas | October 19-22, 2022

GOLD MEDAL PRESENTATION

STEPHEN LEDBETTER, MD, MPH, FASER



aser.org



ERadSociety



ASER 2022 ANNUAL SCIENTIFIC MEETING

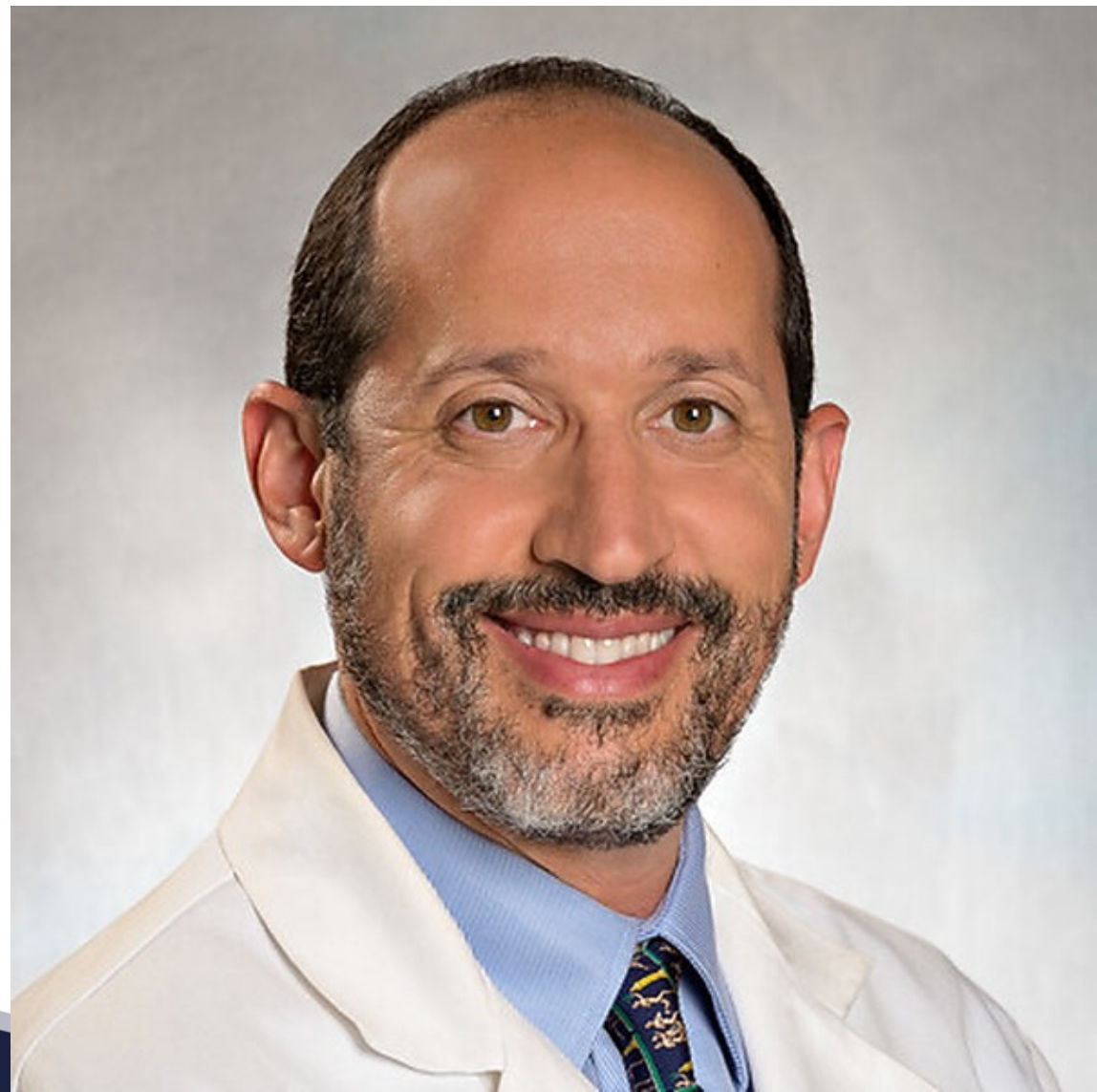
Hilton, Austin | Austin, Texas | October 19-22, 2022

GOLD MEDAL AWARDEE

Aaron Sodickson MD, FASER

Division Chief
Emergency Radiology
Brigham and Women's Hospital

Associate Professor
Harvard Medical School
Boston, Massachusetts



ASER 2022 ANNUAL SCIENTIFIC MEETING

Hilton, Austin | Austin, Texas | October 19-22, 2022

WINGED CADUCEUS AWARD PRESENTATION

FELIPE MUNERA, MD, FASER



ASER 2022 ANNUAL SCIENTIFIC MEETING

Hilton, Austin | Austin, Texas | October 19-22, 2022

WINGED CADUCEUS AWARDEE

Diego Nunez MD, MPH, FASER

Director

Emergency Neuroradiology
Brigham and Women's Hospital

Senior Lecturer

Harvard Medical School
Boston, Massachusetts



ASER 2022 ANNUAL SCIENTIFIC MEETING

Hilton, Austin | Austin, Texas | October 19-22, 2022

SHAN RESEARCH GRANT AWARD PRESENTATION

SUZANNE CHONG, MD



ASER 2022 ANNUAL SCIENTIFIC MEETING

Hilton, Austin | Austin, Texas | October 19-22, 2022

SHAN GRANT RECIPIENTS



Karen Buch, MD



Marc Succi, MD

Multi-Institutional/Multi-Specialty Utilization Trends & Efficacy of Head and Neck CT Angiograms Performed in the Emergency Department for Patients Without Focal Neurologic Deficits: A Pilot Study on Appropriate Indications in the Setting of Dizziness, Syncope, Mild Headache, and Mild Trauma.

