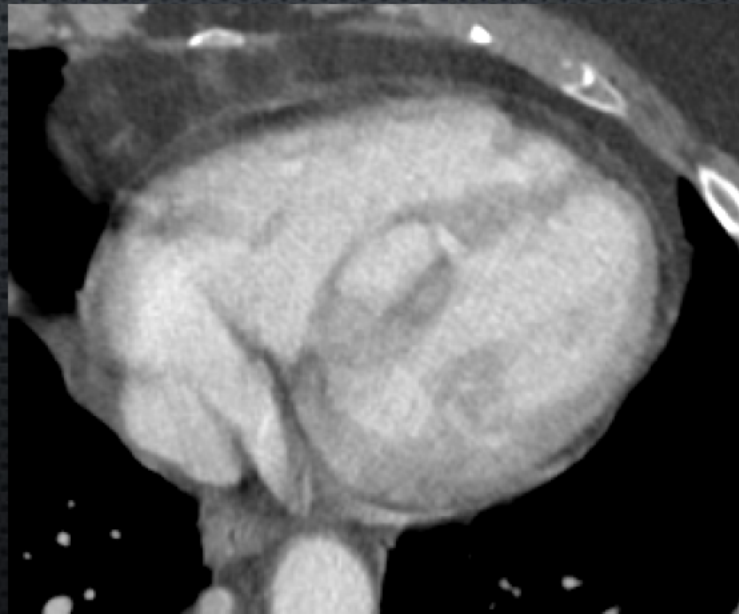
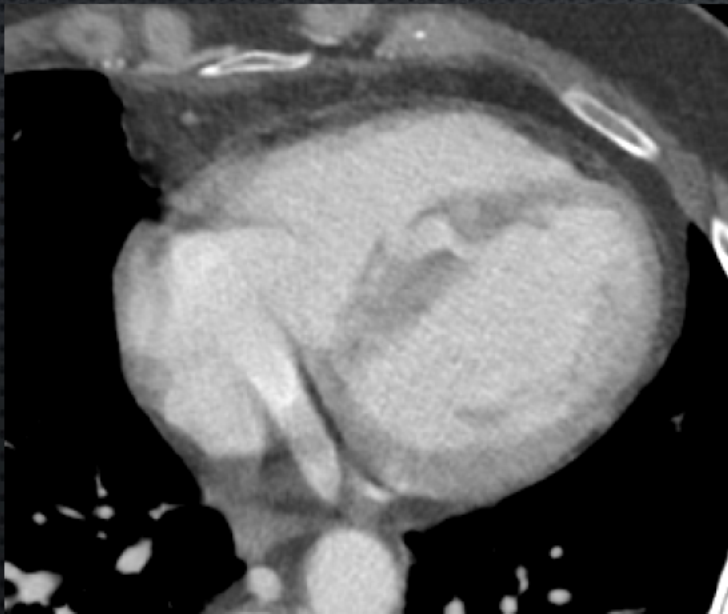


# AMERICAN SOCIETY OF EMERGENCY RADIOLOGY – CASE OF THE DAY

ERGENT ZHIVA, MD  
UNIVERSITY OF CINCINNATI

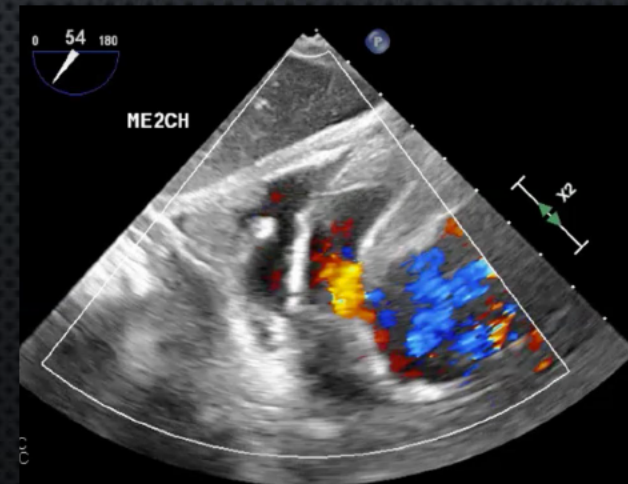
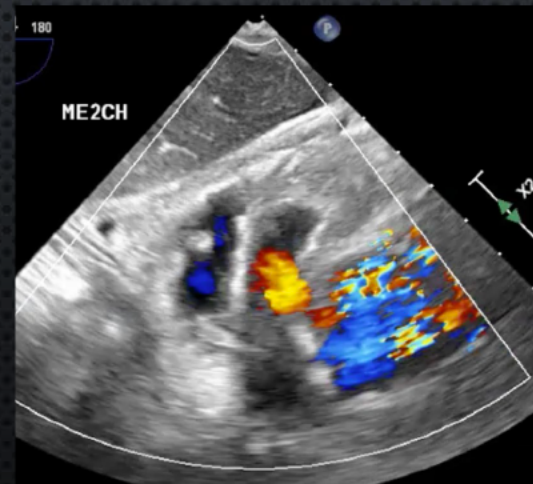
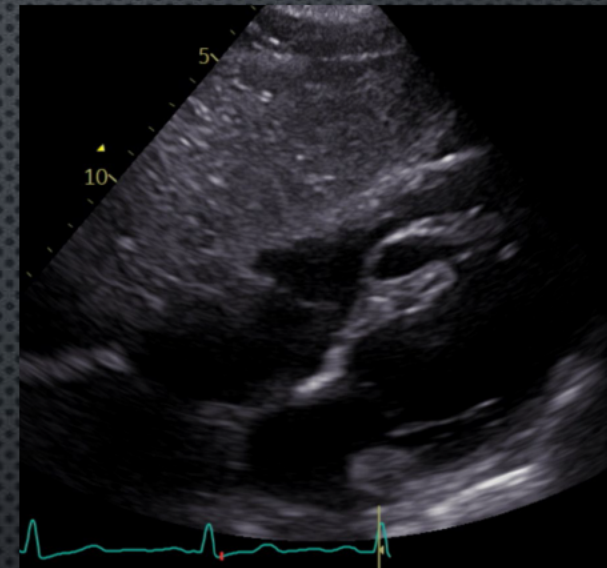
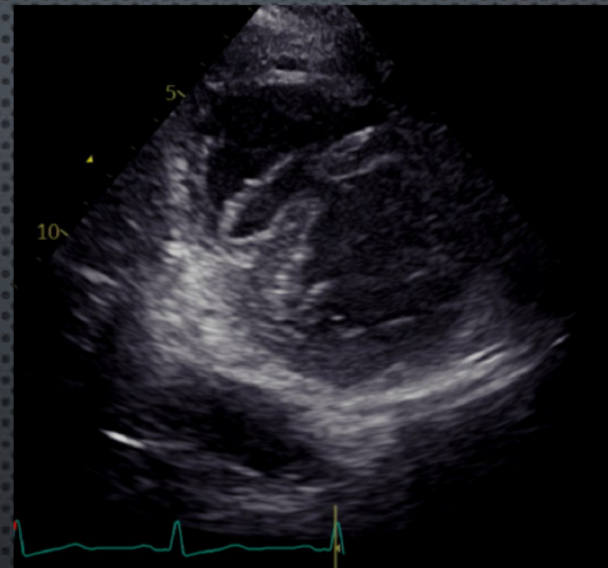
55-YEAR-OLD FEMALE AFTER A MOTOR VEHICLE CRASH (CAR VERSUS POLE). CONTRAST ENHANCED CT (CECT) OF THE CHEST AT PRESENTATION.



# AMERICAN SOCIETY OF EMERGENCY RADIOLOGY – CASE OF THE DAY

BEDSIDE TRANSTHORACIC  
ECHOCARDIOGRAM (TTE) AT  
PRESENTATION FOLLOWING CECT

(COURTESY OF NICHOLAS BIONDI,  
DO, CARDIOLOGY FELLOW AT THE  
UNIVERSITY OF CINCINNATI DEPT.  
OF CARDIOLOGY)



# AMERICAN SOCIETY OF EMERGENCY RADIOLOGY – CASE OF THE DAY

- CTA OF CHEST PERFORMED 2 DAYS AFTER INITIAL PRESENTATION

